

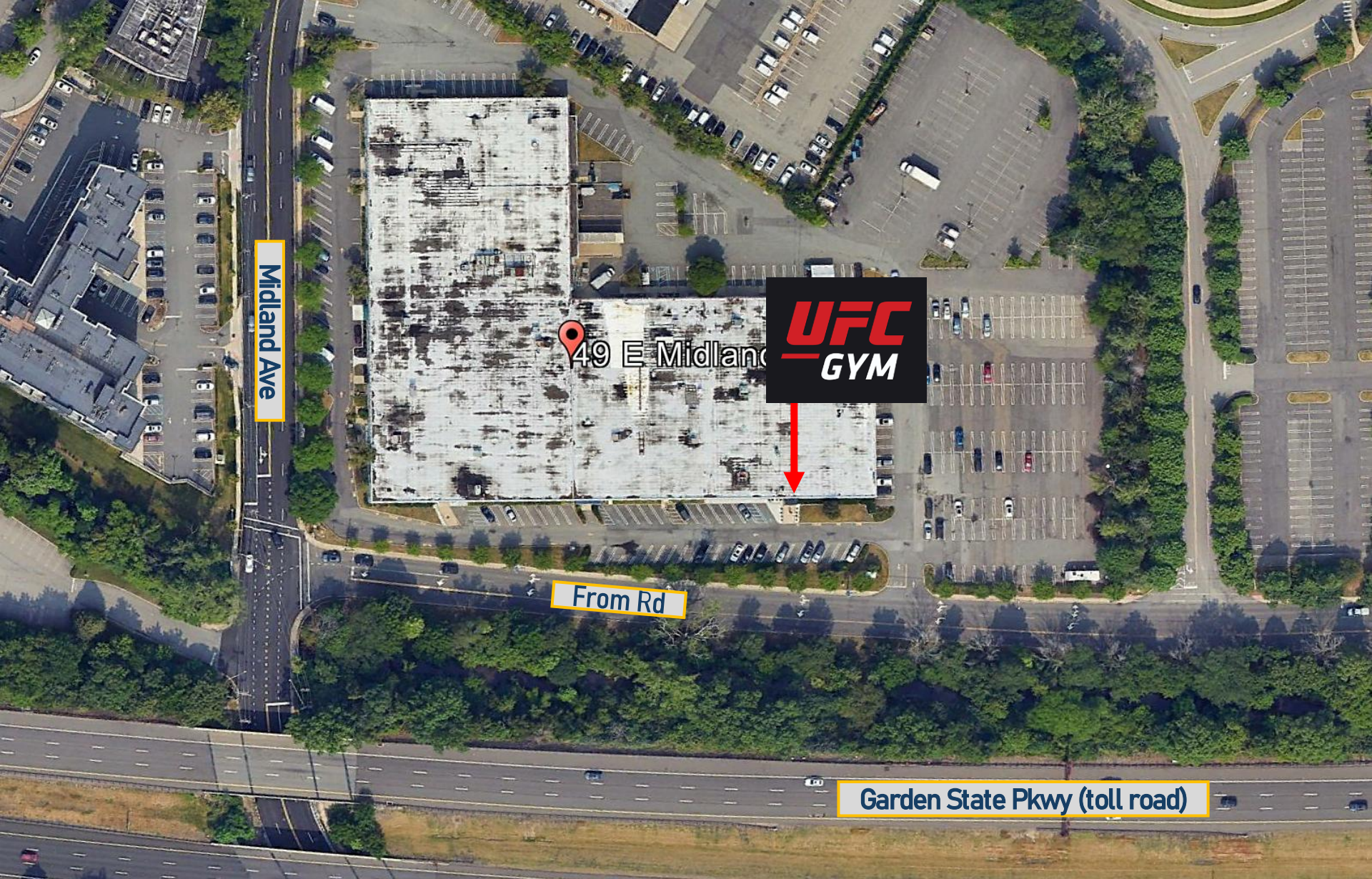


**UFC Gym**  
49 East Midland Ave  
Paramus, NJ

**FOR MORE INFORMATION PLEASE CONTACT EXECUTIVE BROKER:**

**Susan Preister**  
**O: 973.798.6130 Ext.1004**  
**Susan@ZoltekCRE.com**

**ZOLTEK**  
COMMERCIAL REAL ESTATE SERVICES



Midland Ave

49 E Midland

**UFC**  
**GYM**

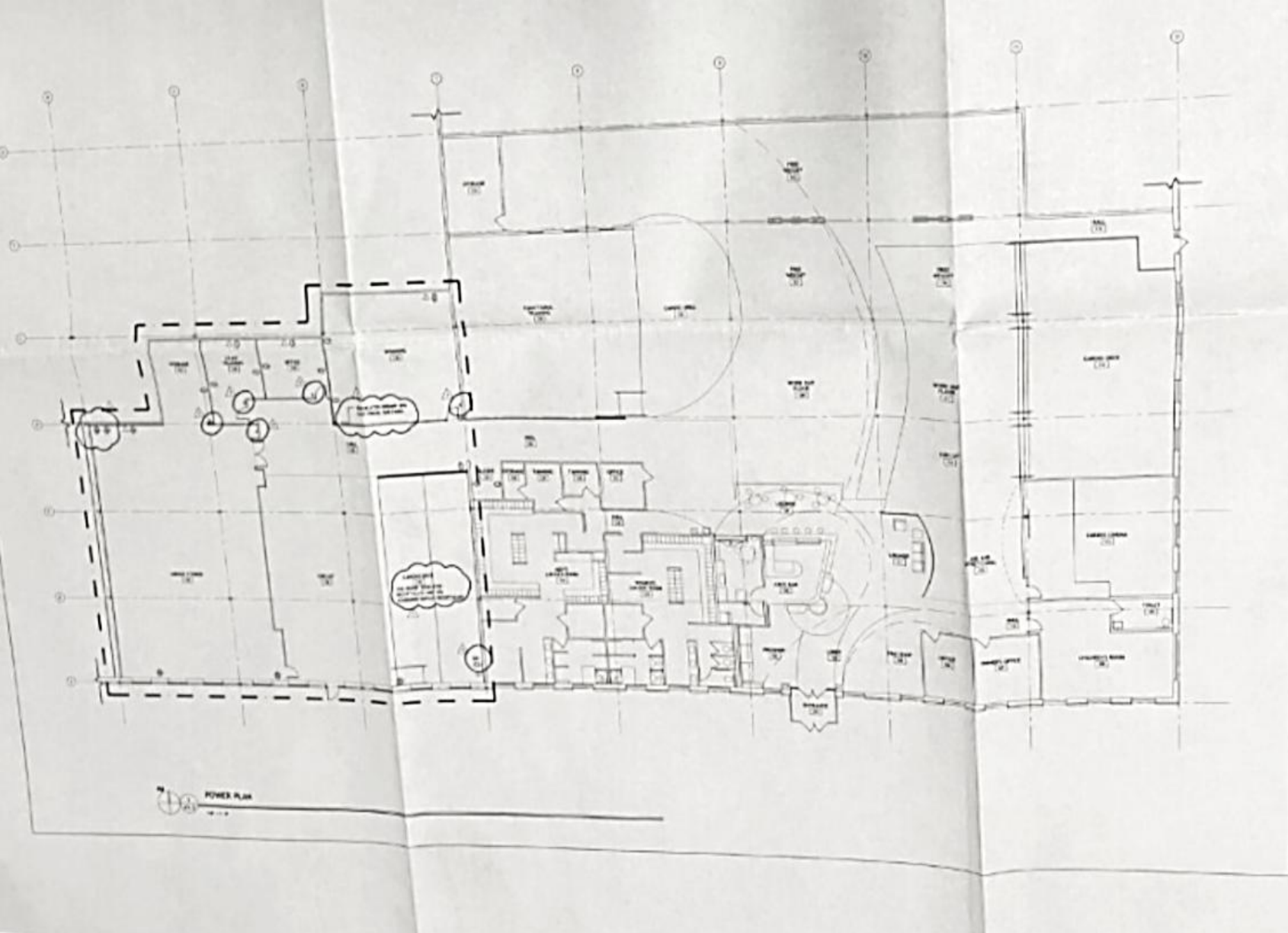
From Rd

Garden State Pkwy (toll road)

**ZOLTEK** COMMERCIAL REAL ESTATE SERVICES- Licensed Real Estate Broker – 15 Furler Street, Totowa, NJ 07512 \* T: 973.798.6130

WWW.ZOLTEKCRE.COM ALTHOUGH ALL THE INFORMATION REGARDING PROPERTY FOR SALE, RENTAL OR FINANCING IS FROM SOURCES DEEMED RELIABLE SUCH INFORMATION HAS NOT BEEN VERIFIED, AND NO EXPRESS REPRESENTATION IS MADE NOR IS ANY TO BE IMPLIED AS TO THE ACCURACY THEREOF, AND IT IS SUBMITTED SUBJECT TO ERRORS, OMISSIONS, CHANGE OF PRICE, RENTAL OR OTHER CONDITIONS, PRIOR SALE, LEASE OR FINANCING, OR WITHDRAWAL WITHOUT NOTICE.

**ZOLTEK**  
COMMERCIAL REAL ESTATE SERVICES



**LEGEND:**

- SWITCH
- OUTLET
- LIGHTING
- PANEL
- WIRE

**PERMIT SET  
NOT FOR  
CONSTRUCTION**

NO.	DATE	DESCRIPTION
1		
2		
3		
4		
5		
6		
7		
8		
9		
10		

**GOLD'S GYM  
PARAMUS**  
40 EAST WILSON AVE  
PARAMUS, NEW YORK

DATE: 01/15/14	SCALE: AS SHOWN
DRAWN BY: J. J. JONES	CHECKED BY: J. J. JONES
PROJECT NO.: 14-001	

**FIRST FLOOR POWER PLAN**

PROJECT NO. 14-001  
 SHEET NO. **A1.3**  
 TOTAL SHEETS 12

**ZOLTEK COMMERCIAL REAL ESTATE SERVICES**- Licensed Real Estate Broker – 15 Furler Street, Totowa, NJ 07512 \* T: 973.798.6130

WWW.ZOLTEKCRE.COM ALTHOUGH ALL THE INFORMATION REGARDING PROPERTY FOR SALE, RENTAL OR FINANCING IS FROM SOURCES DEEMED RELIABLE SUCH INFORMATION HAS NOT BEEN VERIFIED, AND NO EXPRESS REPRESENTATION IS MADE NOR IS ANY TO BE IMPLIED AS TO THE ACCURACY THEREOF, AND IT IS SUBMITTED SUBJECT TO ERRORS, OMISSIONS, CHANGE OF PRICE, RENTAL OR OTHER CONDITIONS, PRIOR SALE, LEASE OR FINANCING, OR WITHDRAWAL WITHOUT NOTICE.

**ZOLTEK**  
COMMERCIAL REAL ESTATE SERVICES