

ZOLTEK

COMMERCIAL REAL ESTATE SERVICES

THE NATIONAL

1420 Irving Street

Rahway, NJ

2nd FLOOR OFFICE



FOR MORE INFORMATION, PLEASE CONTACT EXCLUSIVE BROKER:

Urszula Zoltek
973-798-6130 Ext 1001
Urszula@ZoltekCRE.com

Available for Lease

- Located Downtown in the Heart of Rahway
- Adjacent to the New Jersey Train Transit Station with Direct Connection to NYC
- Rapidly Growing Area with New Development All Around
- Stage for Concerts/Entertainment inside the Square Next Door
- Great Customer Base
- Outstanding Demographics
- High Foot Traffic

2nd Floor – Co Working/Traditional Office Suites

- Trendy Office Space
- Meeting Room & Common Kitchen Equipped with coffee
- Station and more.
- Free Parking Available

Suite 1 – 347 SF Common Room Area

Suite 2 – Kitchen – Common

Suite 3 – 347 SF (AVAILABLE)

Suite 4 – 94 SF (LEASED)

Suite 5 – 312 SF (LEASED)

Suite 6 – 143 SF (AVAILABLE)

Suite 7 – 175 SF (AVAILABLE)

Suite 8 – 307 SF (LEASED)

Suite 9 – 208 SF (LEASED)

[Click Here To Visit: THE RAHWAY NATIONAL](#)

FOR MORE INFORMATION, PLEASE CONTACT EXCLUSIVE BROKER:

Urszula Zoltek

973.896.8377

Urszula@ZoltekCRE.com



Workspace Highlights

•Steps from Rahway Train Station - Direct connection into NYC (38 Minutes)
with service on the Northeast Corridor and North Jersey Coast Line

•Utilities Included

•Wi-Fi Included

•Parking Included

•3500 square feet

•7 - Private Offices

•Each office wired with both Coaxial and Fiber internet

•Communal Kitchen

•4 Bathrooms

•Automated & Programmable Lighting System

•Advanced Intercom System - allows for keyless entry
and temporary key creation for delivery access

•Music system in entryway and bathrooms

•Restored 1900s wood flooring and tile

•Exposed brick features

•Business-friendly city

•Free concerts & events at your doorstep in Train Station Plaza.

• Farmers Market every Thursday

•Fashionable Watt Hotel across the street. Perfect for out-of-town clients

•Post Office 1-block away

•Desks made of former bank teller bullet-proof glass included with office

•Communal areas cleaned and maintained by landlord

ZOLTEK

COMMERCIAL REAL ESTATE SERVICES



ZOLTEK

SPARKTOWN
 HISTORIC DISTRICT

Barway

VISIT US ONLINE
WWW.BARWAYSHAPPENING.COM

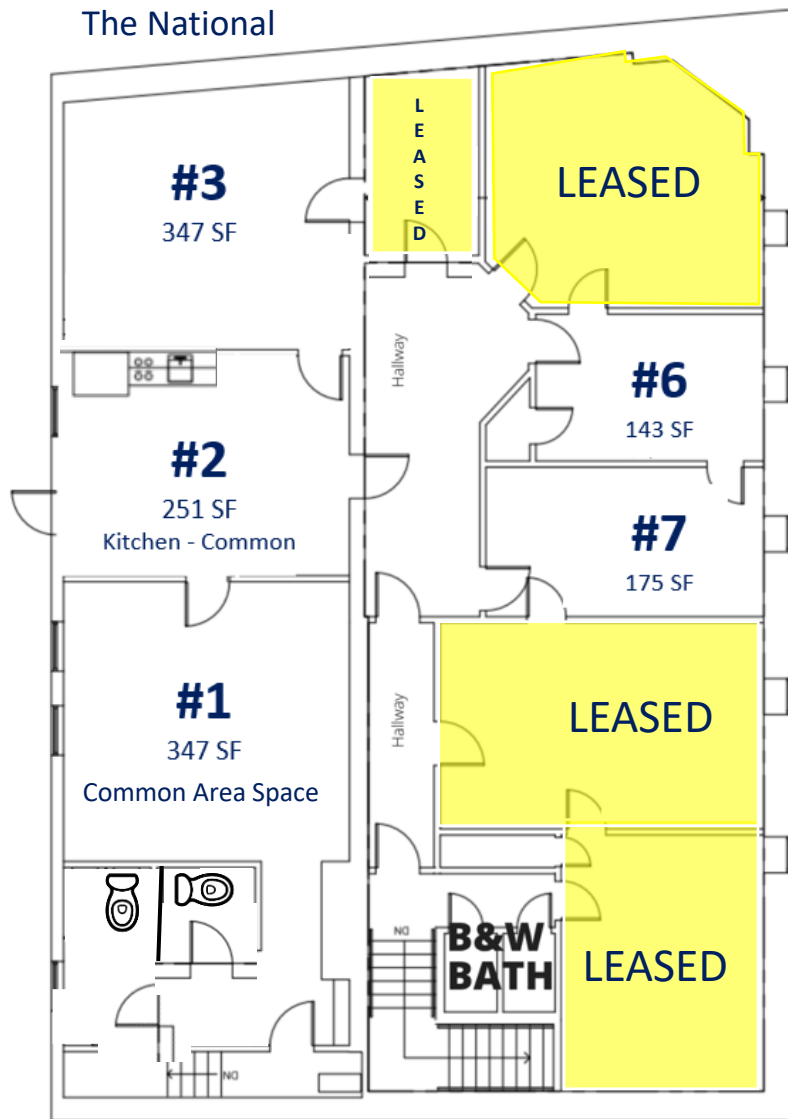
A detailed map of the Barway Historic District, showing streets, landmarks, and a grid system. The map is oriented with North at the top. Key streets shown include Central Avenue, Main Street, and Wilton Avenue. Landmarks include the Barway Historic District, the Barway Historic District, and the Barway Historic District. A small inset map shows the location of Barway within the city of Sparks.

BUSINESS INDEX

Category	Business Name	Address	Phone
Dining	Barway	100 Central Ave	703-734-1111
	Barway	100 Central Ave	703-734-1111
	Barway	100 Central Ave	703-734-1111
	Barway	100 Central Ave	703-734-1111
	Barway	100 Central Ave	703-734-1111
	Barway	100 Central Ave	703-734-1111
	Barway	100 Central Ave	703-734-1111
	Barway	100 Central Ave	703-734-1111
	Barway	100 Central Ave	703-734-1111
	Barway	100 Central Ave	703-734-1111
Bar & Restaurant	Barway	100 Central Ave	703-734-1111
	Barway	100 Central Ave	703-734-1111
	Barway	100 Central Ave	703-734-1111
	Barway	100 Central Ave	703-734-1111
	Barway	100 Central Ave	703-734-1111
	Barway	100 Central Ave	703-734-1111
	Barway	100 Central Ave	703-734-1111
	Barway	100 Central Ave	703-734-1111
	Barway	100 Central Ave	703-734-1111
	Barway	100 Central Ave	703-734-1111
Child & Grocery	Barway	100 Central Ave	703-734-1111
	Barway	100 Central Ave	703-734-1111
	Barway	100 Central Ave	703-734-1111
	Barway	100 Central Ave	703-734-1111
	Barway	100 Central Ave	703-734-1111
	Barway	100 Central Ave	703-734-1111
	Barway	100 Central Ave	703-734-1111
	Barway	100 Central Ave	703-734-1111
	Barway	100 Central Ave	703-734-1111
	Barway	100 Central Ave	703-734-1111
Health & Wellness	Barway	100 Central Ave	703-734-1111
	Barway	100 Central Ave	703-734-1111
	Barway	100 Central Ave	703-734-1111
	Barway	100 Central Ave	703-734-1111
	Barway	100 Central Ave	703-734-1111
	Barway	100 Central Ave	703-734-1111
	Barway	100 Central Ave	703-734-1111
	Barway	100 Central Ave	703-734-1111
	Barway	100 Central Ave	703-734-1111
	Barway	100 Central Ave	703-734-1111
Grab & Go Food	Barway	100 Central Ave	703-734-1111
	Barway	100 Central Ave	703-734-1111
	Barway	100 Central Ave	703-734-1111
	Barway	100 Central Ave	703-734-1111
	Barway	100 Central Ave	703-734-1111
	Barway	100 Central Ave	703-734-1111
	Barway	100 Central Ave	703-734-1111
	Barway	100 Central Ave	703-734-1111
	Barway	100 Central Ave	703-734-1111
	Barway	100 Central Ave	703-734-1111
Learning & Culture	Barway	100 Central Ave	703-734-1111
	Barway	100 Central Ave	703-734-1111
	Barway	100 Central Ave	703-734-1111
	Barway	100 Central Ave	703-734-1111
	Barway	100 Central Ave	703-734-1111
	Barway	100 Central Ave	703-734-1111
	Barway	100 Central Ave	703-734-1111
	Barway	100 Central Ave	703-734-1111
	Barway	100 Central Ave	703-734-1111
	Barway	100 Central Ave	703-734-1111
Personal Services	Barway	100 Central Ave	703-734-1111
	Barway	100 Central Ave	703-734-1111
	Barway	100 Central Ave	703-734-1111
	Barway	100 Central Ave	703-734-1111
	Barway	100 Central Ave	703-734-1111
	Barway	100 Central Ave	703-734-1111
	Barway	100 Central Ave	703-734-1111
	Barway	100 Central Ave	703-734-1111
	Barway	100 Central Ave	703-734-1111
	Barway	100 Central Ave	703-734-1111
Professional Services	Barway	100 Central Ave	703-734-1111
	Barway	100 Central Ave	703-734-1111
	Barway	100 Central Ave	703-734-1111
	Barway	100 Central Ave	703-734-1111
	Barway	100 Central Ave	703-734-1111
	Barway	100 Central Ave	703-734-1111
	Barway	100 Central Ave	703-734-1111
	Barway	100 Central Ave	703-734-1111
	Barway	100 Central Ave	703-734-1111
	Barway	100 Central Ave	703-734-1111
Retail	Barway	100 Central Ave	703-734-1111
	Barway	100 Central Ave	703-734-1111
	Barway	100 Central Ave	703-734-1111
	Barway	100 Central Ave	703-734-1111
	Barway	100 Central Ave	703-734-1111
	Barway	100 Central Ave	703-734-1111
	Barway	100 Central Ave	703-734-1111
	Barway	100 Central Ave	703-734-1111
	Barway	100 Central Ave	703-734-1111
	Barway	100 Central Ave	703-734-1111
Specialty	Barway	100 Central Ave	703-734-1111
	Barway	100 Central Ave	703-734-1111
	Barway	100 Central Ave	703-734-1111
	Barway	100 Central Ave	703-734-1111
	Barway	100 Central Ave	703-734-1111
	Barway	100 Central Ave	703-734-1111
	Barway	100 Central Ave	703-734-1111
	Barway	100 Central Ave	703-734-1111
	Barway	100 Central Ave	703-734-1111
	Barway	100 Central Ave	703-734-1111

Produced by Sparktown Barway Historic District
 2014-2015 Edition - Revised November 2015

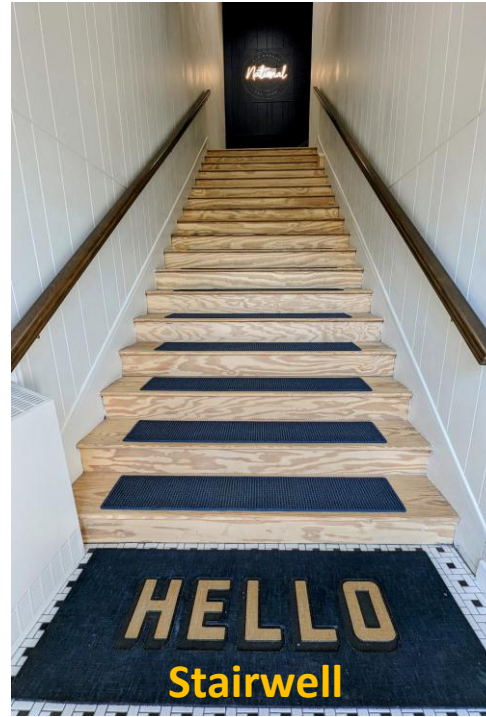
2nd Floor The National



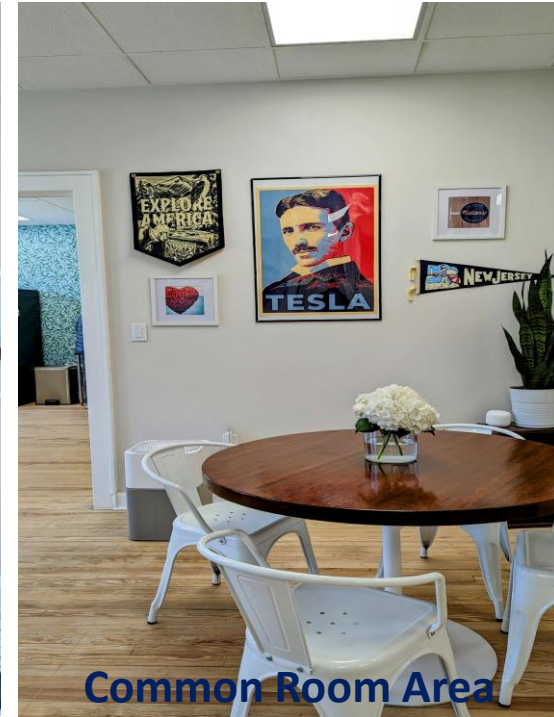
Z
O
L
T
E
K



Stairwell



Stairwell



Common Room Area



Kitchen



Common Room Area

Z
O
L
T
E
K



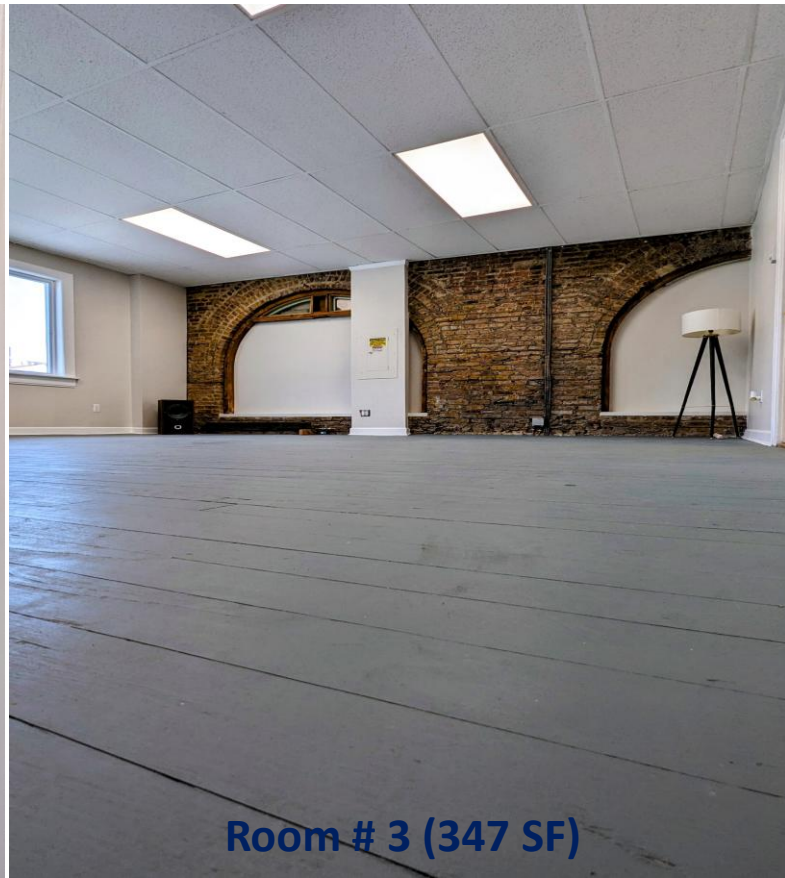
Hallway



Room #5 (312 SF)



Room #3 (347 SF)



Room # 3 (347 SF)



SITE

THE COFFEE BOX

THE IRVING INN

Edward Jones



Rahway Transportation Center

WATT HOTEL
TAPESTRY COLLECTION
160 Residential Units



Rahway Police Department

Rahway Municipal Administrator

Rahway Recreation Center

RAHWAY TRAIN STATION
NJ TRANSIT



HAMILTON APARTMENTS
58 Units

27



RAHWAY ARTS APARTMENTS
20 Units

MERIDIA BROWNSTONES
188 Units

THE WILLOWS
57 Units

PARK SQUARE
159 Units

GRAND MERIDIA
88 Units

METRO RAHWAY
116 Units

THE GRAMERCY
42 Units

THE MINT
116 Units

MERIDIA LAFAYETTE
115 Units

SITE

RIVERSIDE APARTMENTS
30 Units

RIVER PLACE AT RAHWAY
136 Units

W MILTON AVENUE

RAHWAY TRAIN STATION
NJ TRANSIT

SKYVIEW
160 Units

GOLDEN AGE TOWERS
196 Units

E MILTON AVENUE



MAIN STREET

WATER'S EDGE
109 Units

REVA RAHWAY
219 Units

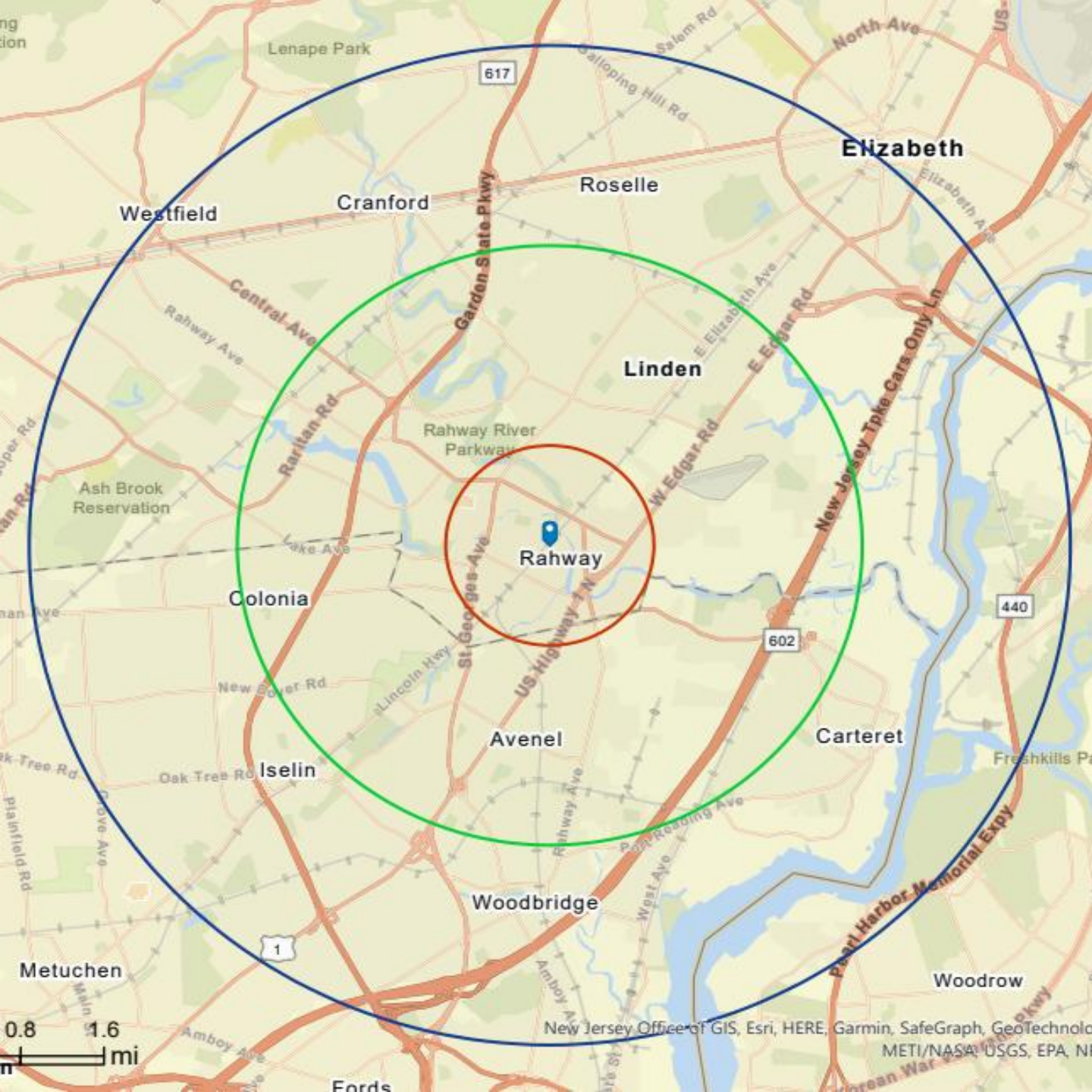
9

ROSEGATE APARTMENTS
150 Units



ZOLTEK

COMMERCIAL REAL ESTATE SERVICES



**FOR MORE INFORMATION,
PLEASE CONTACT
EXCLUSIVE BROKER:**

Ursula Zoltek
973.896.8377
Ursula@ZoltekCRE.com

ZOLTEK
COMMERCIAL REAL ESTATE SERVICES

<i>Demo- graphics</i>	<i>1 Mile</i>	<i>3 Miles</i>	<i>5 Miles</i>
Population	22,99	138,089	381,531
Daytime Population	20,923	124,667	359,593
Average HH Income	\$70,205	\$82,994	\$83,088
Median Age	39.2	41.5	40.4

New Jersey Office of GIS, Esri, HERE, Garmin, SafeGraph, GeoTechnology, METI/NASA, USGS, EPA, NCEM