

# ZOLTEK

COMMERCIAL REAL ESTATE SERVICES

## THE NATIONAL

1420 Irving Street

Rahway, NJ

RETAIL



FOR MORE INFORMATION, PLEASE CONTACT EXCLUSIVE BROKER:

Urszula Zoltek  
973-798-6130 Ext 1001  
Urszula@ZoltekCRE.com

### **Available for Lease**

- Located Downtown in the Heart of Rahway
- Adjacent to the New Jersey Train Transit Station with Direct Connection to NYC
- Rapidly Growing Area with New Development All Around
- Stage for Concerts/Entertainment inside the Square Next Door
- Great Customer Base
- Outstanding Demographics
- High Foot Traffic

### **Ground Floor – 6,462 SF of Retail Space**

- Minimum divisible: 741 SF
- Two Patio Areas Available for Outside Dining
- New Stylish Storefronts
- Huge Frontage with Great Exposure For Signage and Advertisement

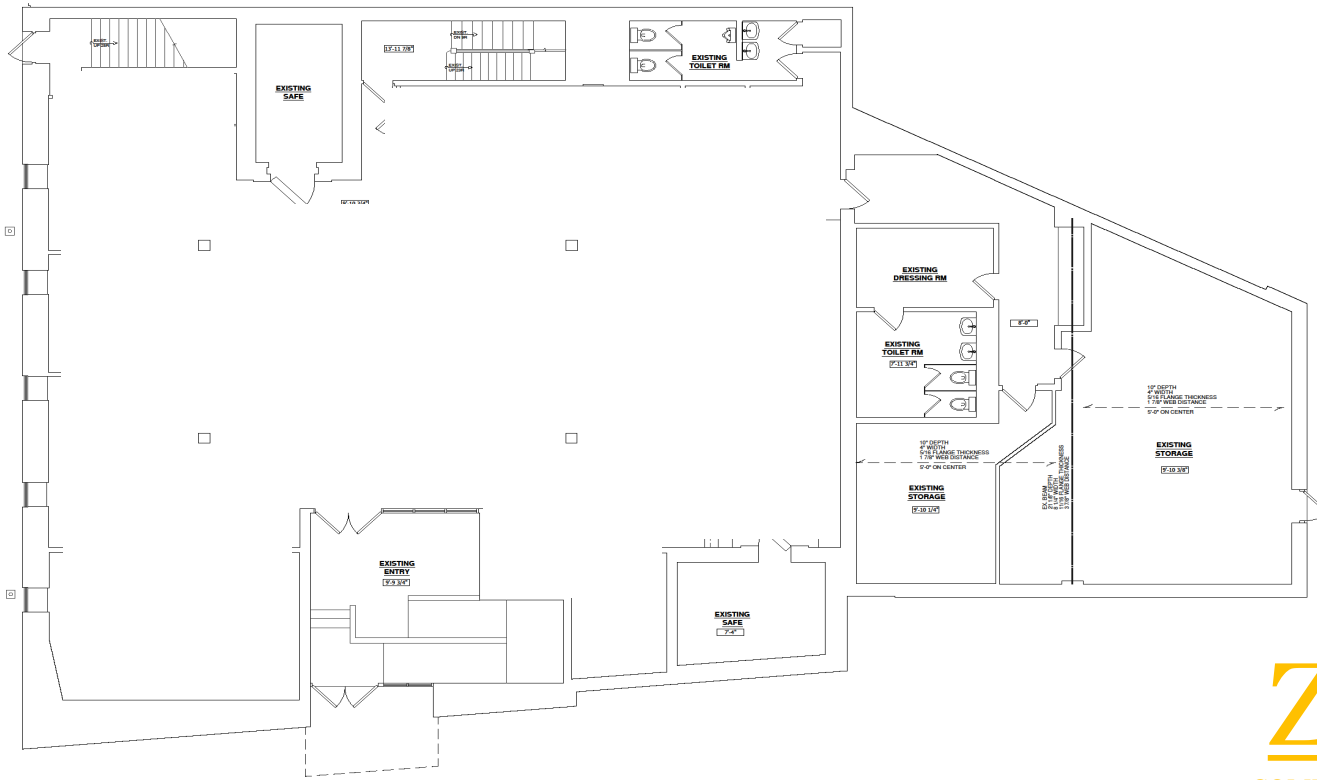


**ZOLTEK COMMERCIAL REAL ESTATE SERVICES**- Licensed Real Estate Broker- 21-00 Route 208, Suite 140, Fair Lawn, NJ 07410 \* T: 973.798.6130

[WWW.ZOLTEKCRE.COM](http://WWW.ZOLTEKCRE.COM) ALTHOUGH ALL THE INFORMATION REGARDING PROPERTY FOR SALE, RENTAL OR FINANCING IS FROM SOURCES DEEMED RELIABLE SUCH INFORMATION HAS NOT BEEN VERIFIED, AND NO EXPRESS REPRESENTATION IS MADE NOR IS ANY TO BE IMPLIED AS TO THE ACCURACY THEREOF, AND IT IS SUBMITTED SUBJECT TO ERRORS, OMISSIONS, CHANGE OF PRICE, RENTAL OR OTHER CONDITIONS, PRIOR SALE, LEASE OR FINANCING, OR WITHDRAWAL WITHOUT NOTICE.



ZOLTEK COMMERCIAL REAL ESTATE SERVICES, LICENSED REAL ESTATE BROKER, 1100 S. 10th Street, Suite 100, Park Lawn, NJ 07410 • 1-973-398-6100  
 WITH ZOLTEK RE-CRANAL THROUGH THE USE OF PARALLEL RELEVANT PROPERLY TRAINED AND LICENSED AGENTS WITH SERVICES DEEMED RELIABLE, SUCH INFORMATION HAS NOT BEEN VERIFIED, AND NO EXPRESS REPRESENTATION IS MADE NOR IS ANY TO BE IMPLIED AS TO THE ACCURACY THEREOF. THE DATA IS SUBJECT TO ERROR, OMISSIONS, CHANGE OF STATUS, AND OTHER CONDITIONS. PRIOR SALE, LEASE OR FINANCING, OR WITHDRAWAL WITHOUT NOTICE.



## Ground Floor The National

This is the original 1<sup>st</sup> floor plan and it's subject to change depending on tenant's requirements.

**ZOLTEK**  
COMMERCIAL REAL ESTATE SERVICES





**SITE**

THE COFFEE BOX

THE IRVING INN  
*Specialty*

Edward Jones



Rahway Transportation Center

RAHWAY TRAIN STATION  
NJ TRANSIT

WATT HOTEL  
TAPESTRY COLLECTION  
160 Residential Units



Rahway Police Department



Rahway Municipal Administrator

Rahway Recreation Center



**HAMILTON APARTMENTS**  
58 Units



27

**RAHWAY ARTS APARTMENTS**  
20 Units

**MERIDIA BROWNSTONES**  
188 Units

**THE WILLOWS**  
57 Units

**PARK SQUARE**  
159 Units

**GRAND MERIDIA**  
88 Units

**METRO RAHWAY**  
116 Units

**THE GRAMERCY**  
42 Units

**THE MINT**  
116 Units

**MERIDIA LAFAYETTE**  
115 Units

**RIVERSIDE APARTMENTS**  
30 Units

**SITE**

**RIVER PLACE AT RAHWAY**  
136 Units

W MILTON AVENUE

**RAHWAY TRAIN STATION**  
NJ TRANSIT

**SKYVIEW**  
160 Units

**GOLDEN AGE TOWERS**  
196 Units



E MILTON AVENUE

MAIN STREET

**WATER'S EDGE**  
109 Units

**REVA RAHWAY**  
219 Units

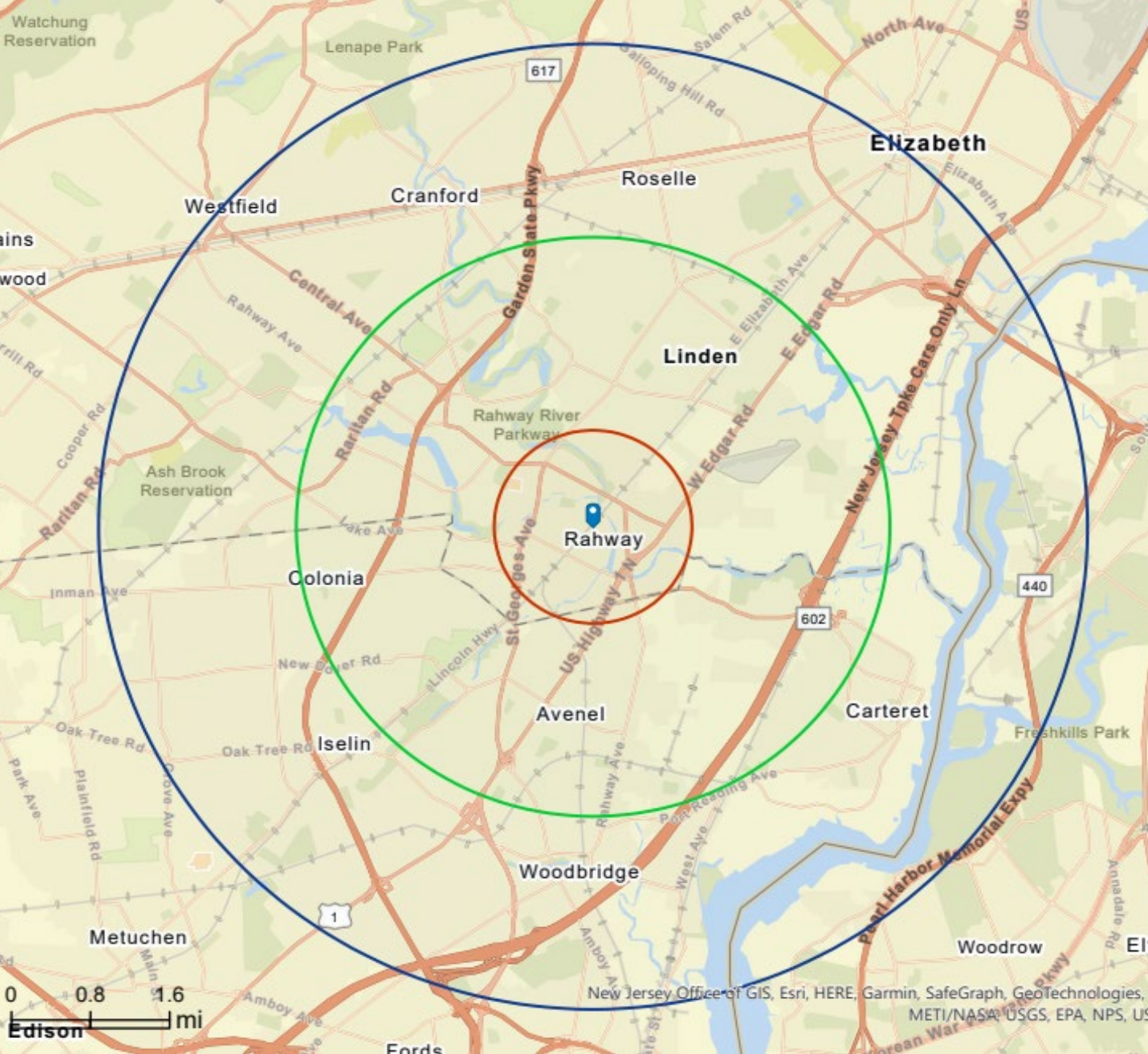
9

**ROSEGATE APARTMENTS**  
150 Units



**ZOLTEK**

COMMERCIAL REAL ESTATE SERVICES



# ZOLTEK

COMMERCIAL REAL ESTATE SERVICES

FOR MORE INFORMATION,  
PLEASE CONTACT  
EXCLUSIVE BROKER:

Urszula Zoltek  
973-798-6130 Ext 1001  
Urszula@ZoltekCRE.com

<b>Demo-graphics</b>	<b>1 Mile</b>	<b>3 Miles</b>	<b>5 Miles</b>
Population	22,99	138,089	381,531
Daytime Population	20,923	124,667	359,593
Average HH Income	\$70,205	\$82,994	\$83,088
Median Age	39.2	41.5	40.4

**ZOLTEK COMMERCIAL REAL ESTATE SERVICES**- Licensed Real Estate Broker- 21-00 Route 208, Suite 140, Fair Lawn, NJ 07410 \* T: 973.798.6130

[WWW.ZOLTEKCRE.COM](http://WWW.ZOLTEKCRE.COM) ALTHOUGH ALL THE INFORMATION REGARDING PROPERTY FOR SALE, RENTAL OR FINANCING IS FROM SOURCES DEEMED RELIABLE SUCH INFO RMATION HAS NOT BEEN VERIFIED, AND NO EXPRESS REPRESENTATION IS MADE NOR IS ANY TO BE IMPLIED AS TO THE ACCURACY THEREOF, AND IT IS SUBMITTED SUBJECT TO ERRORS, OMISSIONS, CHANGE OF PRICE, RENTAL OR OTHER CONDITIONS, PRIOR SALE, LEASE OR FINANCING, OR WITHDRAWAL WITHOUT NOTICE.