

AVAILABLE
1,550 SF
End Cap



AVAILABLE
10,550 SF
Standalone Building



505 Washington Ave, Belleville, NJ

FOR MORE INFORMATION PLEASE CONTACT EXCLUSIVE BROKER:

Urszula Zoltek
C: 973.896.8377
Urszula@ZoltekCRE.com

ZOLTEK
COMMERCIAL REAL ESTATE SERVICES

JOIN



AVAILABLE FOR LEASE

- 1,150 SF – Former Supercuts
- 10,550 SF – Freestanding Building (Former CVS)
- Frontage 23 Feet
- Parking Lot
- Signalized Intersection
- Located at the intersection of Washington Ave & Little Road
- Busy Downtown Community
- Dense Population

FOR MORE INFORMATION
PLEASE CONTACT EXCLUSIVE BROKER:

Urszula Zoltek
C: 973.896.8377

Urszula@ZoltekCRE.com

ZOLTEK

COMMERCIAL REAL ESTATE SERVICES



1,150 SF

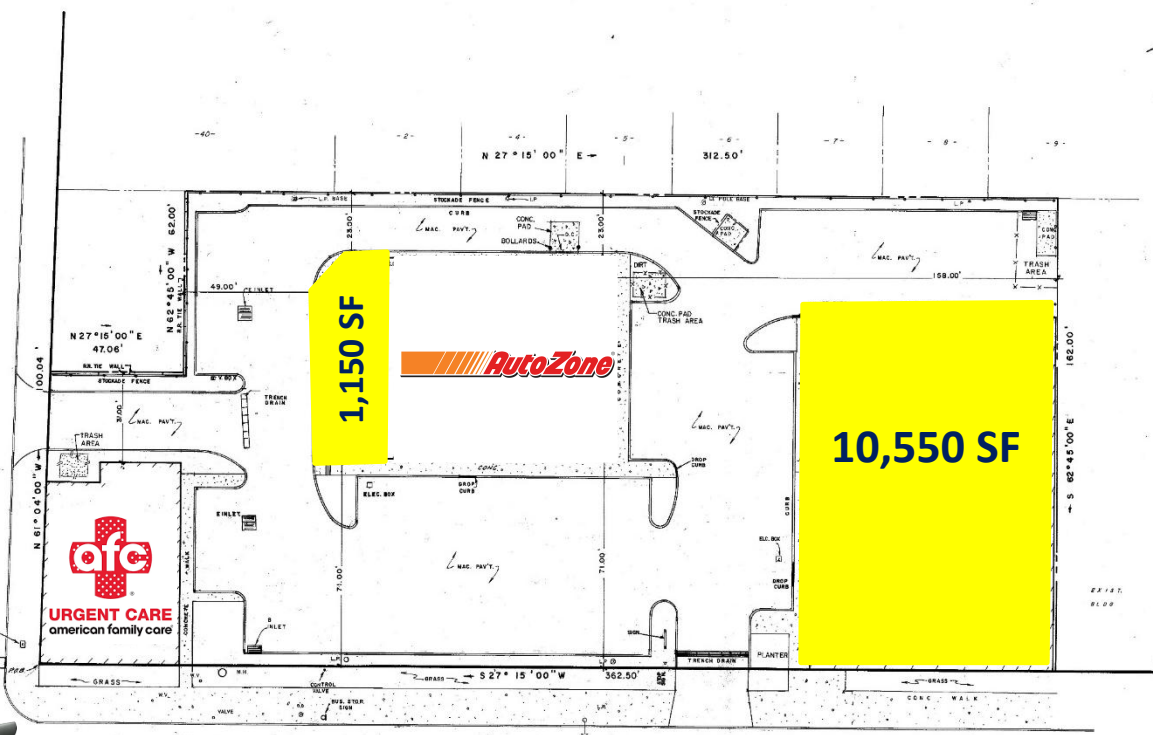


10,550 SF



Traffic Count Washington Ave: 15,661 VPD

LITTLE E (100' ROW) ROAD



WASHINGTON (100' ROW) AVENUE

CERTIFIED TO:

- ROSE-BELLEVILLE LIMITED PARTNERSHIP
- GROSS, TRUSS & HERSTIK, P.C. AND CAROL J. TRUSS, ESQ.
- INDEPENDENCE COMMUNITY BANK, ITS SUCCESSORS AND/OR ASSIGNS
- COASTAL TITLE AGENCY, INC.
- LAWYERS TITLE INSURANCE CORPORATION
- CULLEN AND DYKMAN, LLP, AND STEVEN J. ROBINSON, ESQ.

TAX LOTS 33 B 81 IN BLOCK 152

LOCATION SURVEY

TOWNSHIP OF BELLEVILLE
ESSEX COUNTY, NEW JERSEY

HUBSCHMAN ENGINEERING
ENGINEERS, LAND SURVEYORS, PLANNERS
450 SYLVAN AVENUE
TRENTON, NEW JERSEY 07834

ROBERT J. MUELLER, P.L.S.
PROFESSIONAL LAND SURVEYOR
N.J. LIC. 37206

THE INFORMATION SHOWN HEREON CORRECTLY REPRESENTS THE CONDITIONS FOUND AND AS OF THE DATE OF THE FIELD SURVEY, EXCEPT FOR SUCH MISTAKES OR OMISSIONS AS MAY, UPON THE EXAMINE AND NOT CORRECT.

NEVER ON SETTING CORNER MARKERS OBTAINED FROM ULTIMATE USER PURSUANT TO THE BOARD OF PROFESSIONAL ENGINEERS AND LAND SURVEYORS REGULATION N.J.A.C. 17:27-19

REV.	DATE	BY	JOB No.
	01/30/2008		431

ZOLTEK

SITE

JOIN:



Motorcycle Mall



Traffic Count Washington Ave: 15,661 VPD



Rodeway Inn



Belleville
Elementary
School 9



East Gateway of
Nutley Apartments



Demographics	<i>1 Mile</i>	<i>3 Miles</i>	<i>5 Miles</i>
Population	33,646	247,127	667,360
Daytime Employees	7,481	71,196	302,435
Households	12,603	92,793	247,607
Median Age	40.8	40	38.1
Average HH Income	\$104,579	\$101,677	\$96,311

FOR FURTHER INFORMATION PLEASE
CONTACT EXCLUSIVE AGENTS:

Urszula Zoltek
C: 973.896.8377
Urszula@ZoltekCRE.com

ZOLTEK
COMMERCIAL REAL ESTATE SERVICES