

THE NATIONAL

1420 Irving Street

Rahway, NJ

2nd FLOOR OFFICE



FOR MORE INFORMATION, PLEASE CONTACT EXCLUSIVE BROKER:

Urszula Zoltek
973-798-6130 Ext 1001
Urszula@ZoltekCRE.com

Available for Lease

- Located Downtown in the Heart of Rahway
- Adjacent to the New Jersey Train Transit Station with Direct Connection to NYC
- Rapidly Growing Area with New Development All Around
- Stage for Concerts/Entertainment inside the Square Next Door
- Great Customer Base
- Outstanding Demographics
- High Foot Traffic

2nd Floor – Co Working/Traditional Office Suites

- Trendy Office Space
- Meeting Room & Common Kitchen Equipped with coffee
- Station and more.
- Free Parking Available

Suite 1 – 347 SF Common Room Area

Suite 2 – Kitchen – Common

Suite 3 – 347 SF

Suite 4 – 94 SF **(LEASED)**

Suite 5 – 312 SF

Suite 6 – 143 SF **(LEASED)**

Suite 7 – 175 SF **(LEASED)**

Suite 8 – 307 SF **(LEASED)**

Suite 9 – 208 SF **(LEASED)**

[Click Here To Visit: THE RAHWAY NATIONAL](#)



Workspace Highlights

•Steps from Rahway Train Station - Direct connection into NYC (38 Minutes)
with service on the Northeast Corridor and North Jersey Coast Line

- Utilities Included
- Wi-Fi Included
- Parking Included
- 3500 square feet
- 7 - Private Offices
- Each office wired with both Coaxial and Fiber internet
- Communal Kitchen
- 4 Bathrooms
- Automated & Programmable Lighting System
- Advanced Intercom System - allows for keyless entry and temporary key creation for delivery access

- Music system in entryway and bathrooms
- Restored 1900s wood flooring and tile
- Exposed brick features
- Business-friendly city
- Free concerts & events at your doorstep in Train Station Plaza.
- Farmers Market every Thursday
- Fashionable Watt Hotel across the street. Perfect for out-of-town clients
- Post Office 1-block away
- Desks made of former bank teller bullet-proof glass included with office
- Communal areas cleaned and maintained by landlord

ZOLTEK

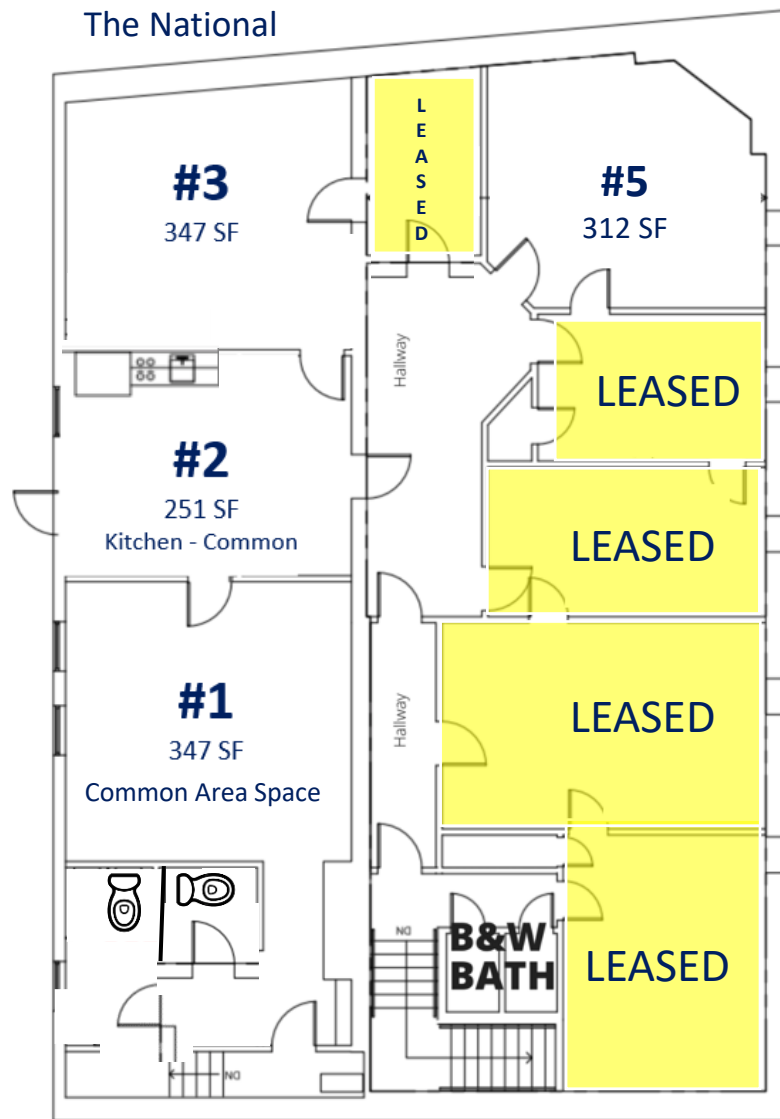
COMMERCIAL REAL ESTATE SERVICES



ZOLPICK COMMERCIAL REAL ESTATE SERVICES, Licensed Real Estate Broker, 35 Fairview Lane, Totowa, NJ 07066, Tel: 973-799-0130

STWV ZOLPICK CORE CANNOT GUARANTEE ALL THE INFORMATION WAS OBTAINED FROM SOURCES DEEMED RELIABLE. SUCH INFORMATION HAS NOT BEEN VERIFIED, AND NO EXPRESS REPRESENTATION IS MADE. SOME INFORMATION MAY BE OBTAINED FROM AN AGENT'S OFFICE, WHICH IS SUBJECT TO SIGNIFICANT CHANGES OF PRICE, RENTAL OR OTHER CONDITIONS, PRIOR SALE, LEASE OR FINANCING, OR WITHDRAWAL WITHOUT NOTICE.

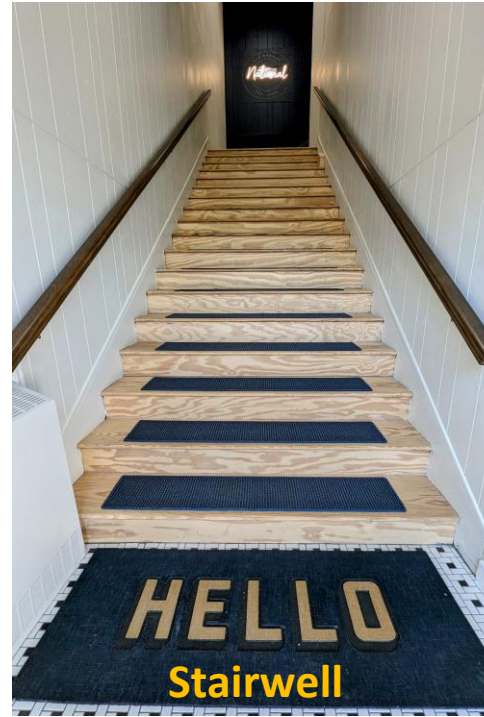
2nd Floor The National



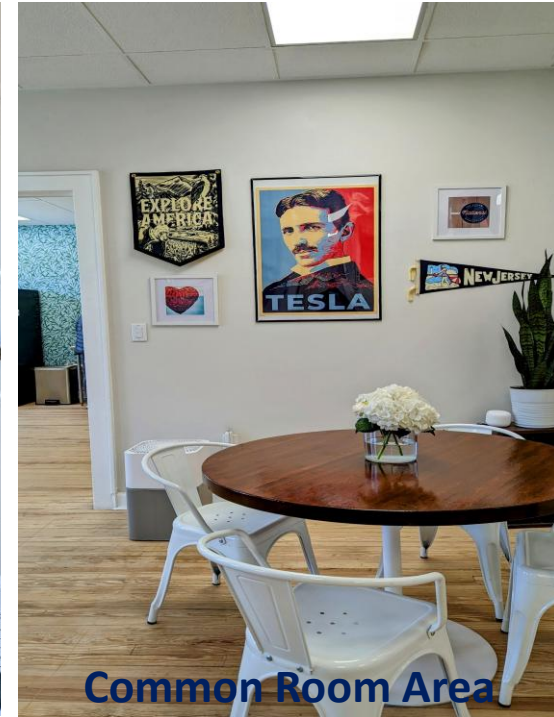
ZOLT EK



Stairwell



Stairwell



Common Room Area



Kitchen



Common Room Area

ZOLTAK



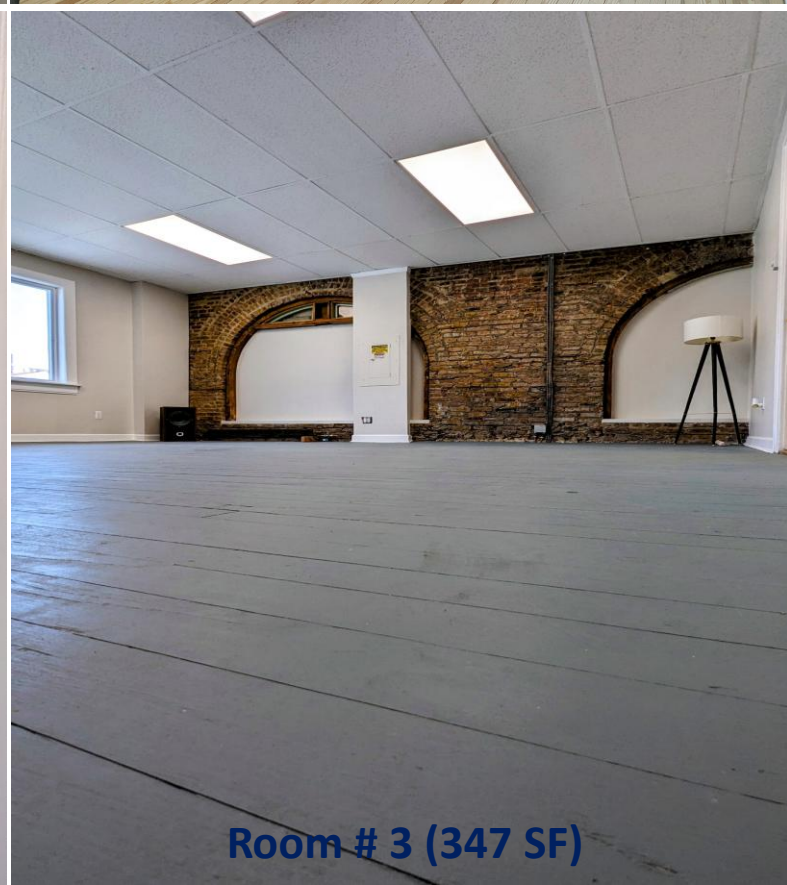
Hallway



Room #5 (312 SF)



Room #3 (347 SF)



Room # 3 (347 SF)



SITE

THE COFFEE BOX

THE IRVING INN

Edward Jones



Rahway Transportation Center

WATT HOTEL
TAPESTRY COLLECTION
160 Residential Units



Rahway Police Department

Rahway Municipal Administrator

Rahway Recreation Center



HAMILTON APARTMENTS
58 Units

27



RAHWAY ARTS APARTMENTS
20 Units

MERIDIA BROWNSTONES
188 Units

THE WILLOWS
57 Units

PARK SQUARE
159 Units

GRAND MERIDIA
88 Units

METRO RAHWAY
116 Units

THE GRAMERCY
42 Units

THE MINT
116 Units

MERIDIA LAFAYETTE
115 Units

RIVERSIDE APARTMENTS
30 Units

RIVER PLACE AT RAHWAY
136 Units

SITE

RAHWAY TRAIN STATION
NJ TRANSIT



SKYVIEW
160 Units

GOLDEN AGE TOWERS
196 Units

E MILTON AVENUE

WATER'S EDGE
109 Units

REVA RAHWAY
219 Units

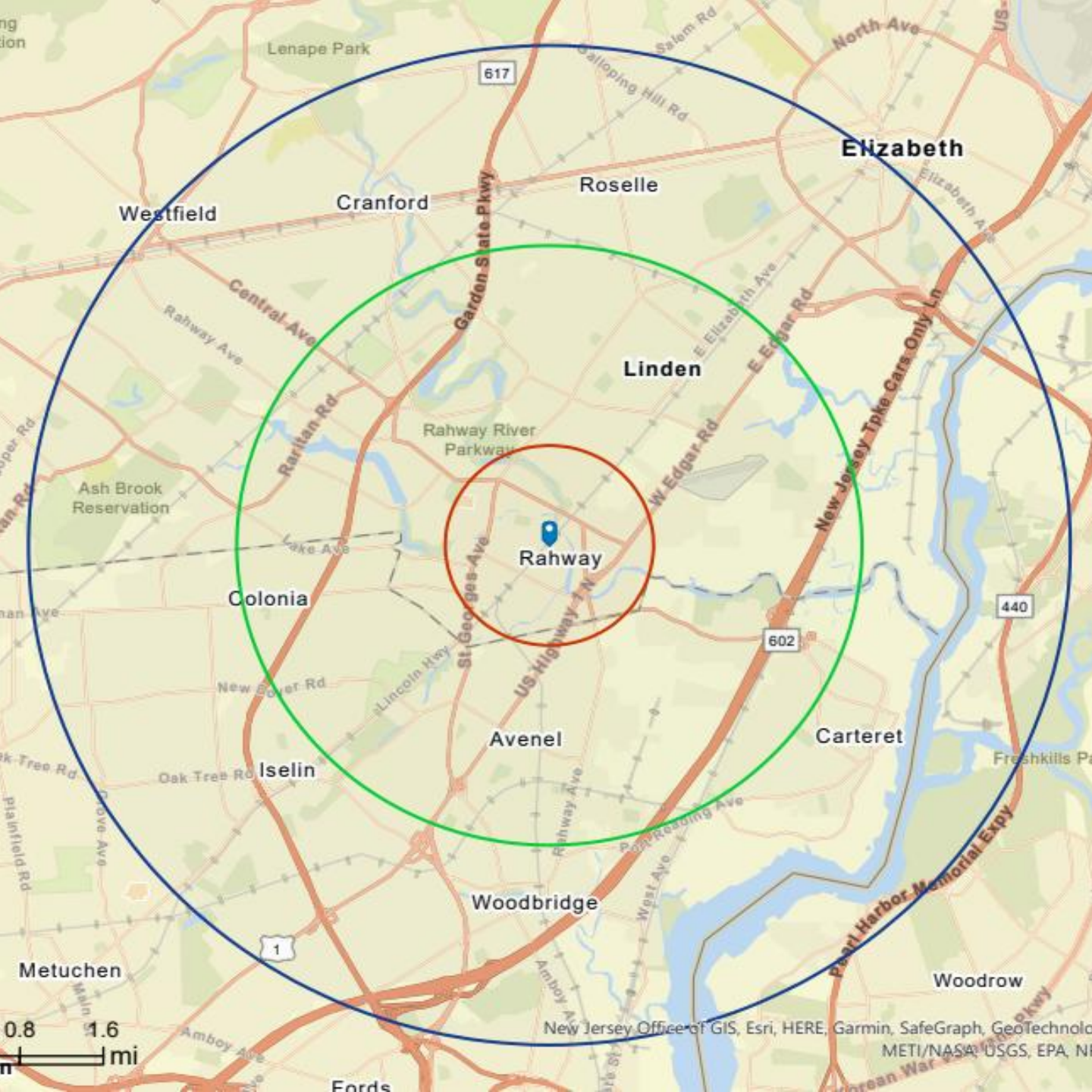
ROSEGATE APARTMENTS
150 Units

9



ZOLTEK

COMMERCIAL REAL ESTATE SERVICES



ZOLTEK

COMMERCIAL REAL ESTATE SERVICES

FOR MORE INFORMATION,
PLEASE CONTACT
EXCLUSIVE BROKER:

Urszula Zoltek
973-798-6130 Ext 1001
Urszula@ZoltekCRE.com

Demo- graphics	1 Mile	3 Miles	5 Miles
Population	22,99	138,089	381,531
Daytime Population	20,923	124,667	359,593
Average HH Income	\$70,205	\$82,994	\$83,088
Median Age	39.2	41.5	40.4