

EAST RUTHERFORD
RETAIL

111 UNION AVE
EAST RUTHERFORD, NJ



FOR MORE INFORMATION PLEASE CONTACT EXCLUSIVE BROKER:

Urszula Zoltek

C: 973.896.8377

Urszula@ZoltekCRE.com

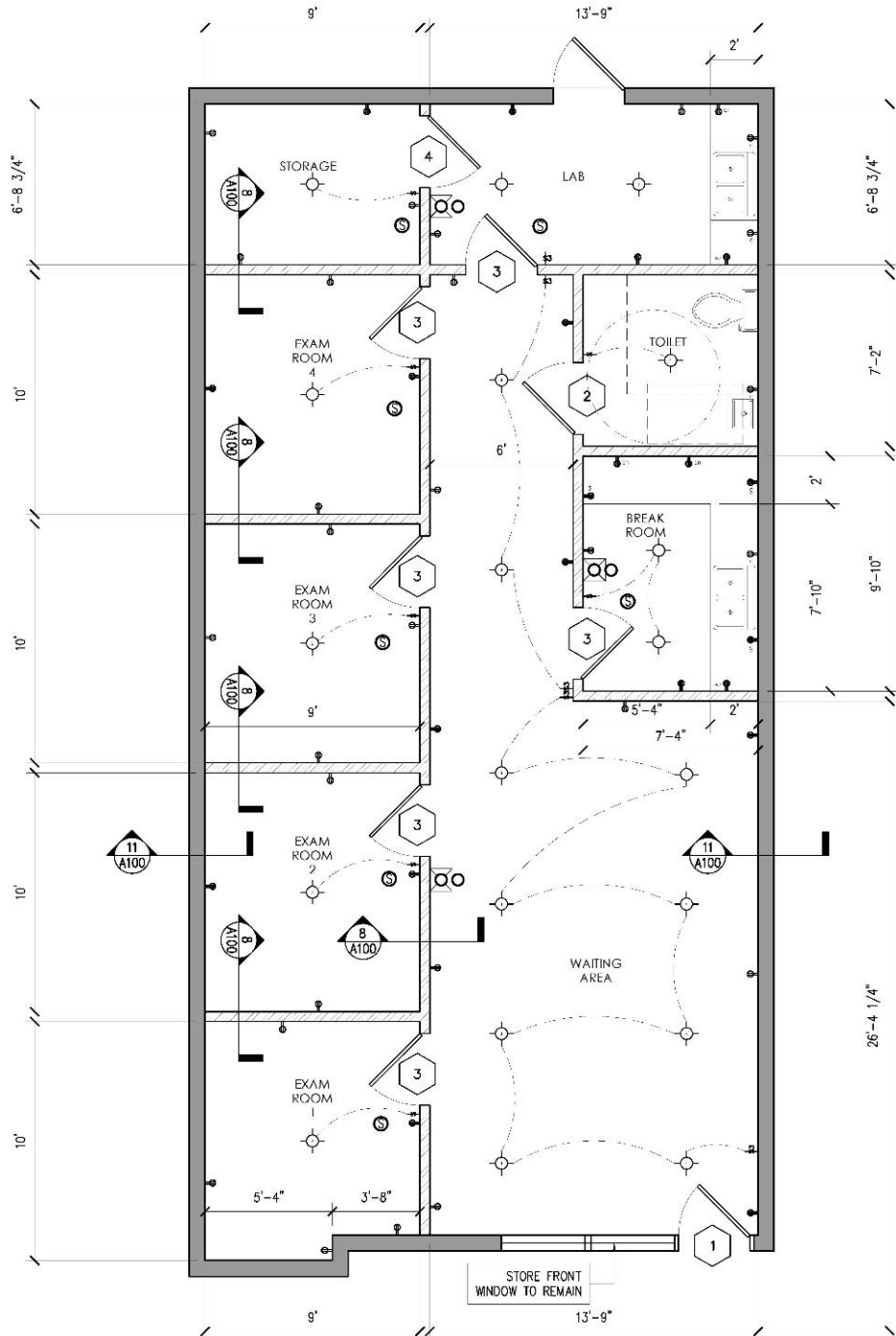
ZOLTEK
COMMERCIAL REAL ESTATE SERVICES

JOIN: 7-ELEVEN, ORANGE LEAF, CITIZENS BANK, and BODY MECHANIX FULLY BUILT SPACE – BRAND NEW - NEVER USED!

- 1,178 SF Available For Lease
- Former MediCentral Space
- Traffic Count: Union Ave: 11,832 VPD
Hackensack St: 11,870 VPD
- 60 Parking Spaces
- High Density Populated Area
- Easy Access to rt 17, 3, and 46.
- Neighboring National Tenants: Lowe's, BJ's, Chipotle, Vitamin Shoppe, TD Bank, Aldi, Ella Mediterranean, Staples, Starbucks, Saladworks, Chill's Grill & Bar, Mattress Firm, Massage Envy, Popeyes, Panera. Marshalls, Krispy Kreme Donuts, and more.



ZOLLTEK





Henry P. Becton
Regional High
School



17

Rutherford
Pancake House

East Rutherford
Police Department



Rutherford
Train Station



Federal
Reserve
Bank



Elia
Mediterranean



EUROPEAN
WAX
CENTER



Rutherford
Bus Station



SITE

17



Traffic Count:
23,702 VPD

Chevrolet
&
Buick

Traffic Count RT 17:
72,000 VPD

Riggin Memorial
Field

1 Mile Away



STAPLES

Farmers Market

17

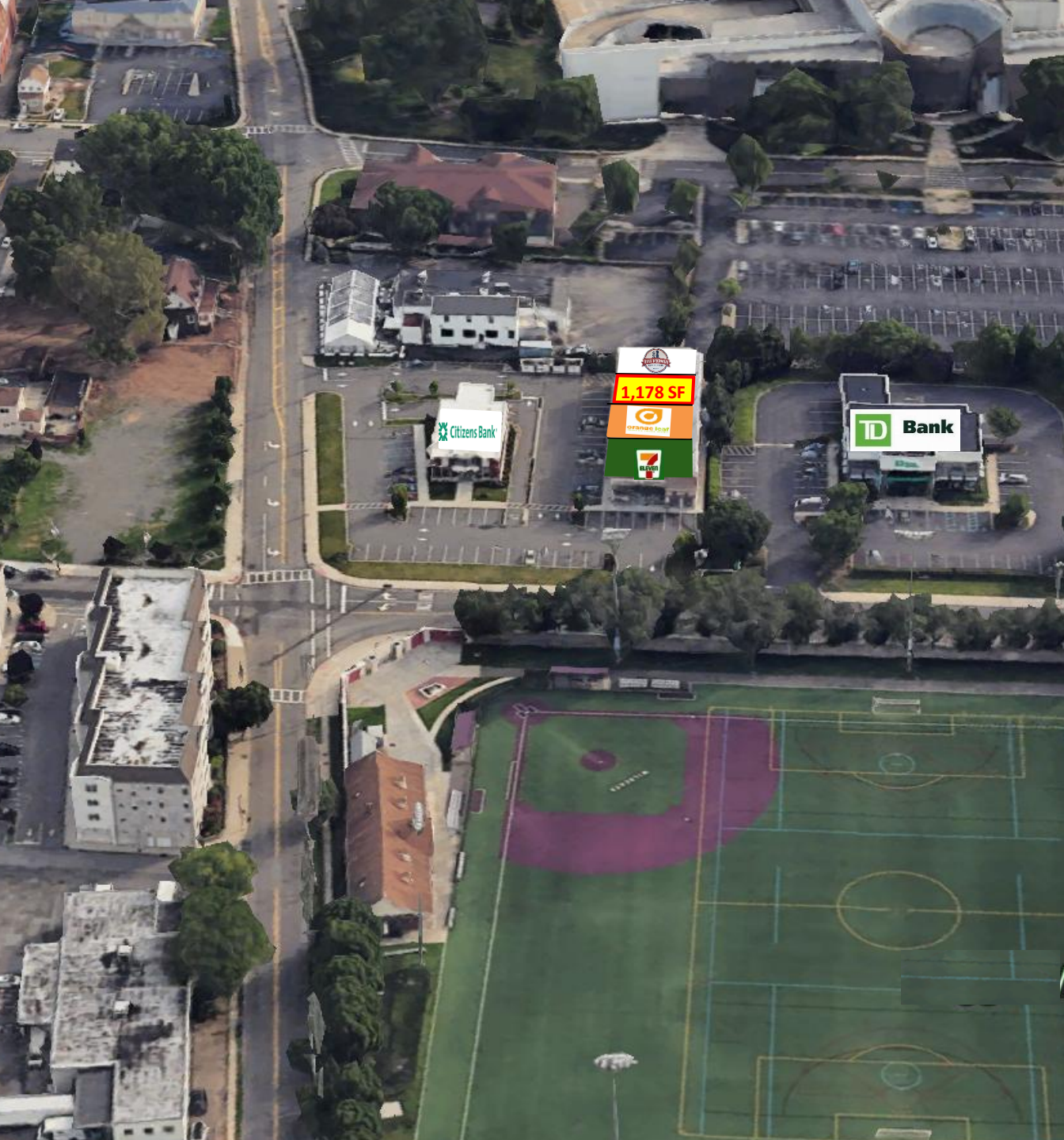


Diamond Chemical



ZOLTEK COMMERCIAL REAL ESTATE SERVICES- Licensed Real Estate Broker- 21-00 Route 208, Suite 140, Fair Lawn , NJ 07410 * T: 973.798.6130

WWW.ZOLTEKCRE.COM ALTHOUGH ALL THE INFORMATION REGARDING PROPERTY FOR SALE, RENTAL OR FINANCING IS FROM SOURCES DEEMED RELIABLE SUCH INFOENMATION HAS NOT BEEN VERIFIED, AND NO EXPRESS REPRESENTATION IS MADE NOR IS ANY TO BE IMPLIED AS TO THE ACCURACY THEREOF, AND IT IS SUBMITTED SUBJECT TO ERRORS, OMISSIONS, CHANGE OF PRICE, RENTAL OR OTHER CONDITIONS, PRIOR SALE, LEASE OR FINANCING, OR WITHDRAWAL WITHOUT NOTICE.



| DEMO-GRAPHICS | <i>1 Mile</i> | <i>3 Miles</i> | <i>5 Miles</i> |
|----------------------|---------------|----------------|----------------|
| Population | 21,185 | 172,341 | 565,032 |
| Daytime Employees | 13,092 | 79,018 | 252,932 |
| Households | 8,260 | 63,332 | 205,680 |
| Average Age | 41.4 | 39.0 | 38.7 |
| Average HH | | | |

**FOR FURTHER INFORMATION PLEASE
CONTACT EXCLUSIVE AGENTS:**

Urszula Zoltek
C: 973.896.8377
Urszula@ZoltekCRE.com

ZOLTEK
 COMMERCIAL REAL ESTATE SERVICES