

# ZOLTEK

COMMERCIAL REAL ESTATE SERVICES

## THE NATIONAL

1420 Irving Street

Rahway, NJ

OFFICE



FOR MORE INFORMATION, PLEASE CONTACT EXCLUSIVE BROKER:

Urszula Zoltek  
973-798-6130 Ext 1001  
[Urszula@ZoltekCRE.com](mailto:Urszula@ZoltekCRE.com)



### Available for Lease

- Located Downtown in the Heart of Rahway
- Adjacent to the New Jersey Train Transit Station with Direct Connection to NYC
- Rapidly Growing Area with New Development All Around
- Stage for Concerts/Entertainment inside the Square Next Door
- Great Customer Base
- Outstanding Demographics
- High Foot Traffic

### 2<sup>nd</sup> Floor – Co Working/Traditional Office Suites

- Trendy Office Space
- Amazing Common Rooftop Space for Comfort & Relaxing
- Meeting Room & Common Kitchen Equipped with coffee
- Station and more.
- Free Parking Available

Suite 1 – 347 SF

Suite 2 – Kitchen – Common

Suite 3 – 347 SF

Suite 4 – Meeting Room Common

Suite 5 – 312 SF

Suite 6 – 143 SF

Suite 7 – 175 SF

Suite 8 – 307 SF

Suite 9 – 208 SF



Outdoor Patio







SPARKTOWN  
DEVELOPING ARTS DISTRICT

# THE Barway, NJ

VISIT US ONLINE  
WWW.BARWAYSHAPPENING.COM

**BUSINESS INDEX**

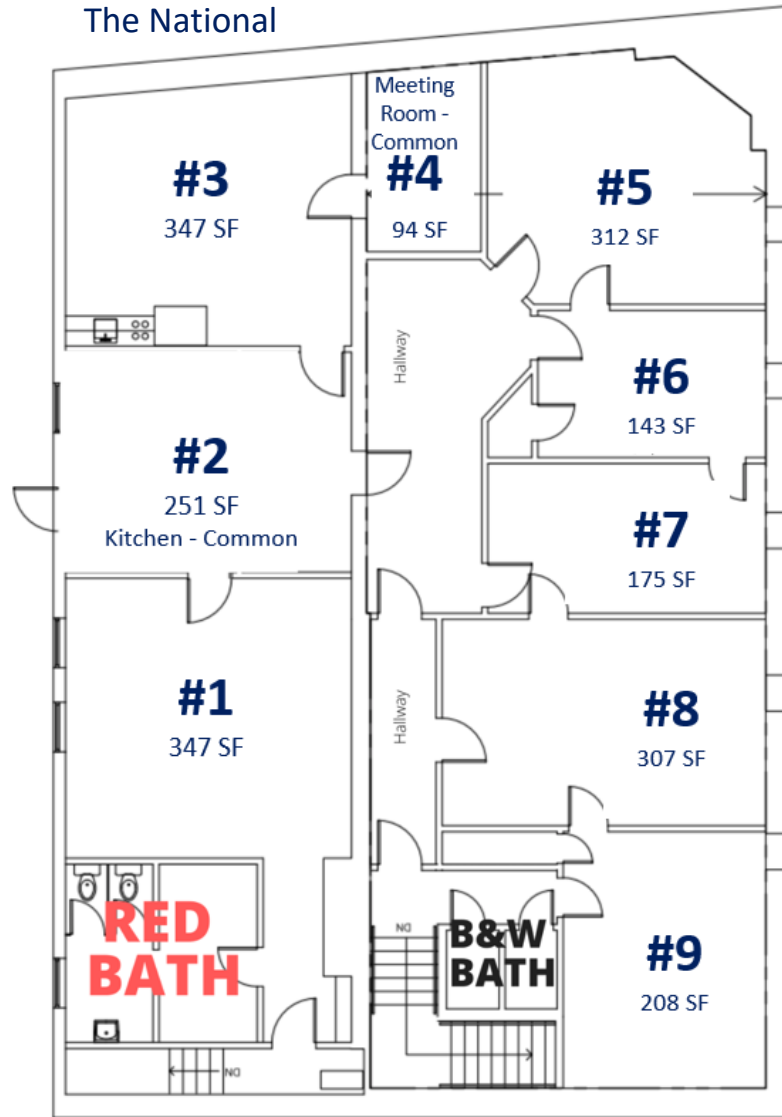
<ul style="list-style-type: none"> <li>☐ Dining</li> <li>☐ Bar &amp; Restaurant</li> <li>☐ Grob &amp; Gro Food</li> </ul>	<ul style="list-style-type: none"> <li>☐ Learning &amp; Culture</li> <li>☐ Personal Services</li> <li>☐ Health &amp; Wellness</li> </ul>	<ul style="list-style-type: none"> <li>☐ Retail</li> <li>☐ Professional Services</li> <li>☐ Security</li> </ul>
---	--	---

Produced by Andrew Lerner, Philip and Patricia Goldblatt  
Art by Andrew Lerner, Philip and Patricia Goldblatt

ZOLTEK COMMERCIAL REAL ESTATE SERVICES, LICENSED REAL ESTATE BROKER, 10000 Sun Valley Blvd., Park Lawn, NJ 07110 • 1-973-398-6100  
 WITHIN ZOLTEK'S REAL ESTATE SERVICES, A DISCLOSURE REGARDING PROPER USE OF INFORMATION IS AVAILABLE AT WWW.ZOLTEK.COM. ALL INFORMATION IS PROVIDED AS IS AND IS NOT BEING VERIFIED. NO EXPRESS REPRESENTATION IS MADE NOR IS ANY TO BE IMPLIED AS TO THE ACCURACY THEREOF. THE INFORMATION IS SUBJECT TO ERRORS, OMISSIONS, CHANGE OF PRICE, AND OTHER UNPUBLISHED CONDITIONS PRIOR TO SALE. PLEASE CONSULT YOUR FINANCING, OR WITHDRAWAL WITHOUT NOTICE.

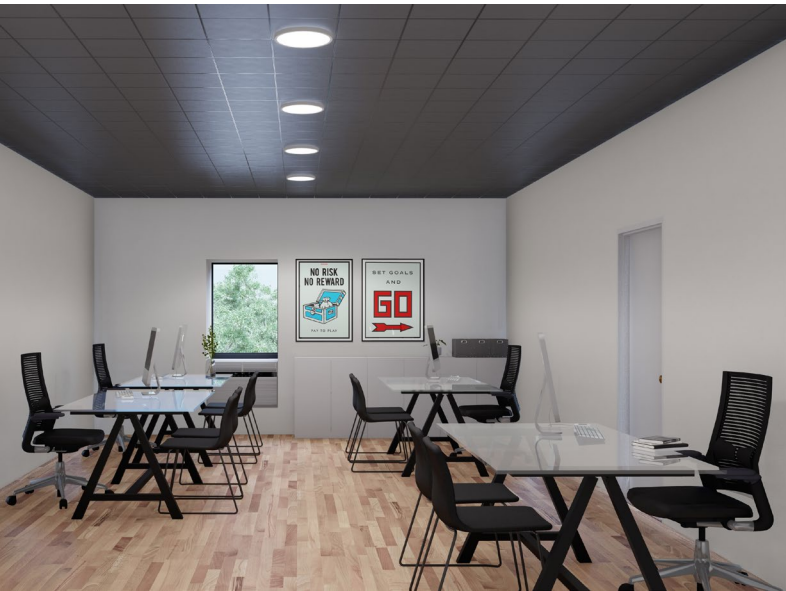


## 2<sup>nd</sup> Floor The National



# ZOLTEK

COMMERCIAL REAL ESTATE SERVICES





# ZOLTEK

COMMERCIAL REAL ESTATE SERVICES







**SITE**

THE COFFEE BOX

THE IRVING INN

Edward Jones



Rahway Transportation Center

WATT HOTEL  
TAPESTRY COLLECTION  
160 Residential Units



Rahway Police Department

Rahway Municipal Administrator

Rahway Recreation Center

RAHWAY TRAIN STATION  
NJ TRANSIT

W CHERRY STREET

CAMPBELL STREET

BROAD STREET

IRVING STREET

LEWIS STREET

MAIN STREET

W MILTON AVENUE

BROAD STREET

FULTON STREET

PIERCE STREET

E EMERSON AVENUE

E MILTON AVENUE

**ZOLTEK**

COMMERCIAL REAL ESTATE SERVICES



**HAMILTON APARTMENTS**  
58 Units

27



**RAHWAY ARTS APARTMENTS**  
20 Units

**MERIDIA BROWNSTONES**  
188 Units

**THE WILLOWS**  
57 Units

**PARK SQUARE**  
159 Units

**GRAND MERIDIA**  
88 Units

**METRO RAHWAY**  
116 Units

**THE GRAMERCY**  
42 Units

**THE MINT**  
116 Units

**MERIDIA LAFAYETTE**  
115 Units

**SITE**

**RIVERSIDE APARTMENTS**  
30 Units

**RIVER PLACE AT RAHWAY**  
136 Units

W MILTON AVENUE

**RAHWAY TRAIN STATION**  
NJ TRANSIT



**SKYVIEW**  
160 Units

**GOLDEN AGE TOWERS**  
196 Units

E MILTON AVENUE

MAIN STREET

**WATER'S EDGE**  
109 Units

**REVA RAHWAY**  
219 Units

9

**ROSEGATE APARTMENTS**  
150 Units



**ZOLTEK**

COMMERCIAL REAL ESTATE SERVICES





# ZOLTEK

COMMERCIAL REAL ESTATE SERVICES

FOR MORE INFORMATION,  
PLEASE CONTACT  
EXCLUSIVE BROKER:

Urszula Zoltek  
973-798-6130 Ext 1001  
Urszula@ZoltekCRE.com

<b>Demo-graphics</b>	<b>1 Mile</b>	<b>3 Miles</b>	<b>5 Miles</b>
Population	22,99	138,089	381,531
Daytime Population	20,923	124,667	359,593
Average HH Income	\$70,205	\$82,994	\$83,088
Median Age	39.2	41.5	40.4

New Jersey Office of GIS, Esri, HERE, Garmin, SafeGraph, GeoTechnologies, METI/NASA, USGS, EPA, NPS, US