

**AVAILABLE**  
**1,550 SF**  
**End Cap**



**AVAILABLE**  
**10,500 SF**  
**Standalone Building**



## 505 Washington Ave, Belleville, NJ

FOR MORE INFORMATION PLEASE CONTACT EXCLUSIVE BROKER:

Urszula Zoltek  
O: 973.798.6130 Ext. 1001  
Urszula@ZoltekCRE.com

**ZOLTEK**  
COMMERCIAL REAL ESTATE SERVICES

# JOIN



## AVAILABLE FOR LEASE

- 1,550 SF – Former Supercuts
- 10,500 SF – Freestanding Building (Former CVS)
- Frontage 23 Feet
- Parking Lot
- Signalized Intersection
- Located at the intersection of Washington Ave & Little Road
- Busy Downtown Community
- Dense Population

FOR MORE INFORMATION  
PLEASE CONTACT EXCLUSIVE BROKER:

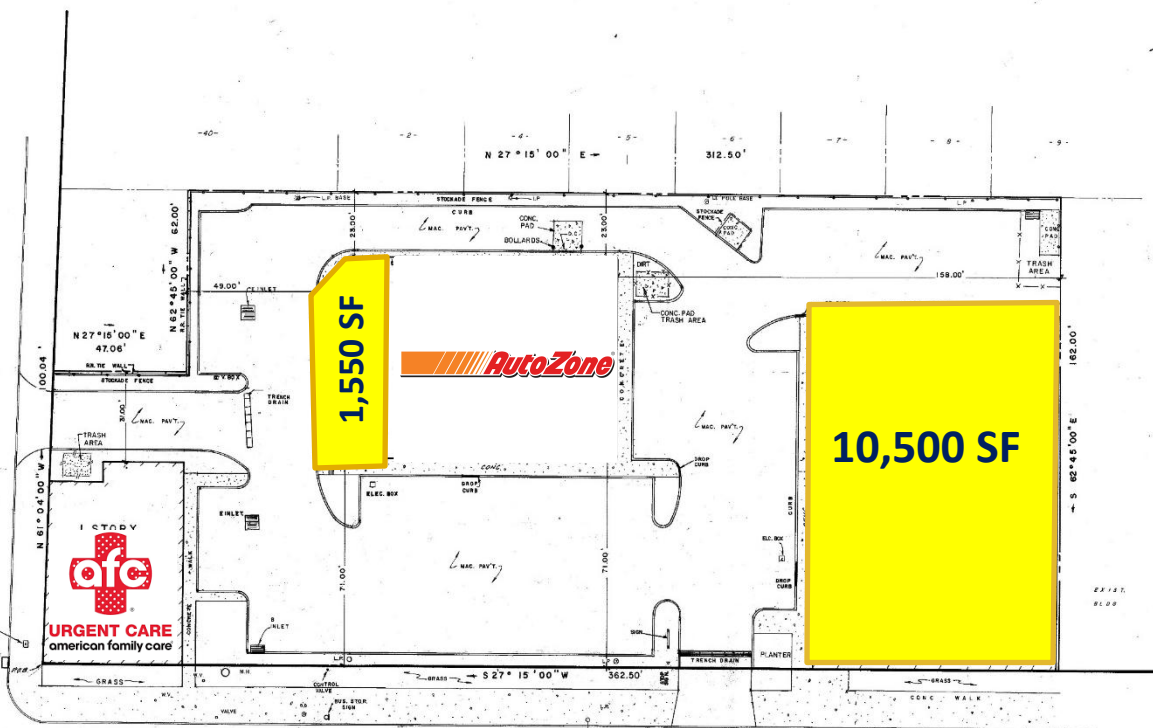
Urszula Zoltek  
O: 973.798.6130 Ext. 1001  
[Urszula@ZoltekCRE.com](mailto:Urszula@ZoltekCRE.com)

# ZOLTEK

COMMERCIAL REAL ESTATE SERVICES



LITTLE ROAD



CERTIFIED TO:

- ROSE-BELLEVILLE LIMITED PARTNERSHIP
- GROSS, TRUSS & HERSTIK, P.C. AND CAROL J. TRUSS, ESO.
- INDEPENDENCE COMMUNITY BANK, ITS SUCCESSORS AND/OR ASSIGNS
- COASTAL TITLE AGENCY, INC.
- LAWYERS TITLE INSURANCE CORPORATION
- CULLEN AND DYKMAN, LLP, AND STEVEN J. ROBINSON, ESO.

TAX LOTS 33 & 31 IN BLOCK 152

**LOCATION SURVEY**

TOWNSHIP OF BELLEVILLE  
ESSEX COUNTY, NEW JERSEY

HUBSCHMAN ENGINEERING  
ENGINEERS AND SURVEYORS PLANNERS  
486 SYLVAN AVENUE  
TRENTON, NJ 08611

ROBERT J. MUELLER, P.L.S.  
PROFESSIONAL LAND SURVEYOR  
N.J. LIC. 37206

THE INFORMATION SHOWN HEREIN CORRECTLY REPRESENTS THE CONDITIONS FOUND, AND AS OF THE DATE OF THE FIELD SURVEY, EXCEPT FOR IMPROVEMENTS OR ENCUMBRANCES, IF ANY, BELOW THE SURFACE AND NOT VISIBLE.

# ZOLTEK

# SITE

JOIN:



Motorcycle Mall



East Gateway of  
Nutley Apartments

Traffic Count Washington Ave: 15,661 VPD



Rodeway Inn



Belleville  
Elementary  
School 9





<b>Demographics</b>	<i>1 Mile</i>	<i>3 Miles</i>	<i>5 Miles</i>
Population	33,646	247,127	667,360
Daytime Employees	7,481	71,196	302,435
Households	12,603	92,793	247,607
Median Age	40.8	40	38.1
Average HH Income	\$104,579	\$101,677	\$96,311

**FOR FURTHER INFORMATION PLEASE  
CONTACT EXCLUSIVE AGENTS:**

**Urszula Zoltek**  
**O: 973.798.6130 Ext. 1001**  
**Urszula@ZoltekCRE.com**

**ZOLTEK**  
 COMMERCIAL REAL ESTATE SERVICES